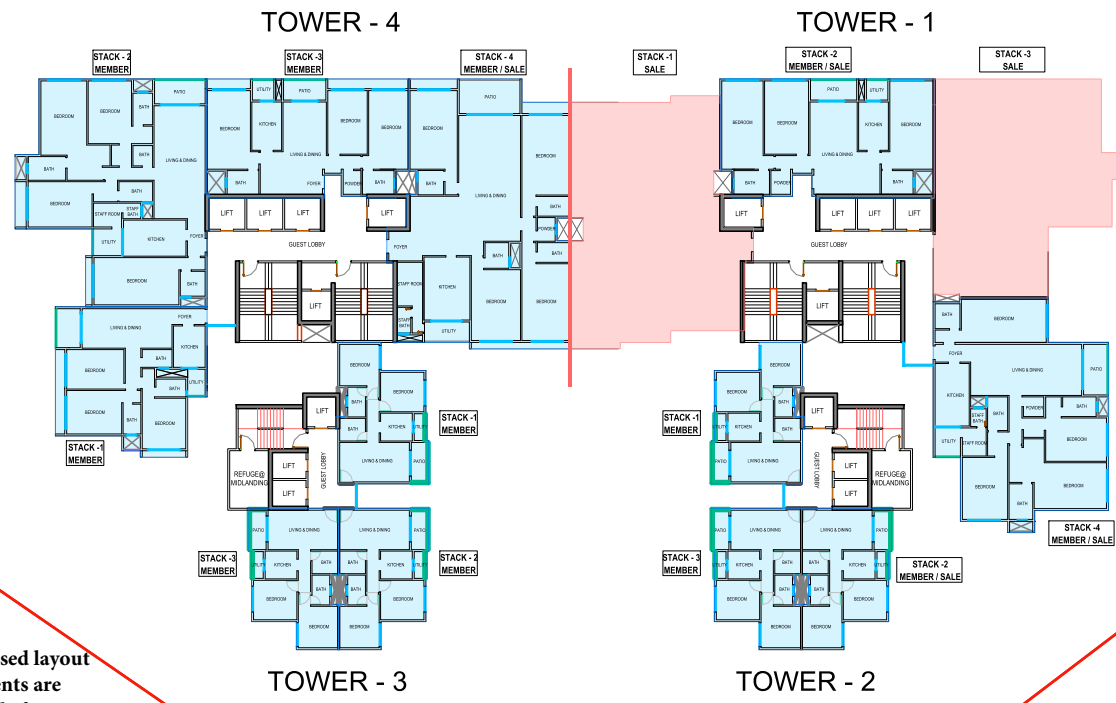


R.G.



Design Disclaimer:
 The proposed design plans, proposed layout and associated design based elements are subject to change based on multiple factors including, but not limited to approval of existing carpet areas by the Competent Authorities, design and planning constraints, municipal approvals, various consultants' inputs and member defined feedback and/or changes amongst others.

TYPICAL FLOOR BLOCK PLAN

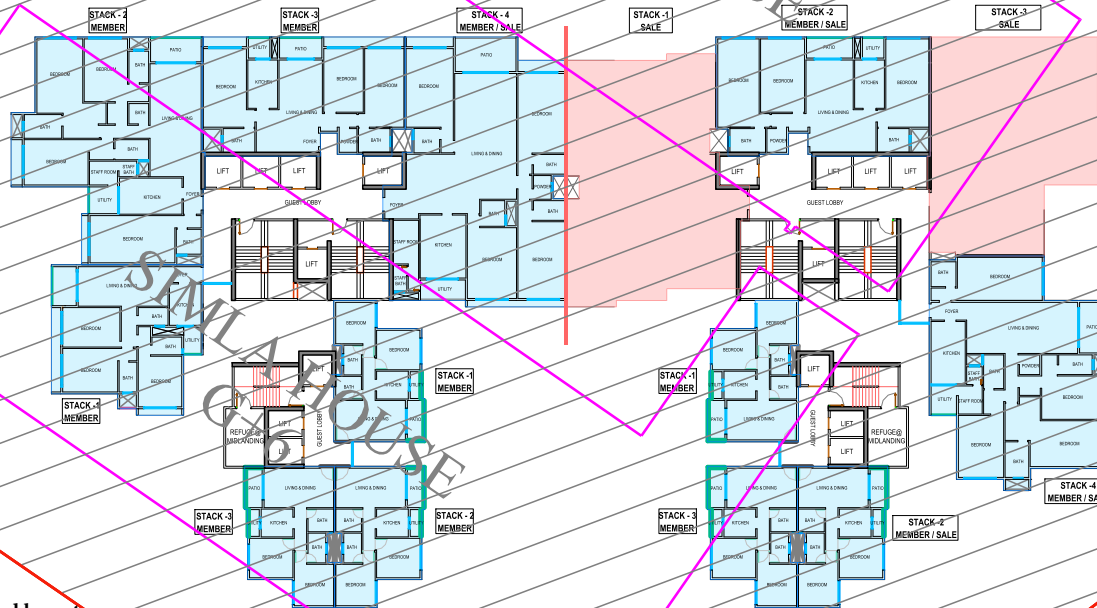


R.G.

SMA HOUSE
G+6

TOWER - 4

TOWER - 1



AOS

TOWER - 3

TOWER - 2

Design Disclaimer:

The proposed design plans, proposed layout and associated design based elements are subject to change based on multiple factors including, but not limited to approval of existing carpet areas by the Competent Authorities, design and planning constraints, municipal approvals, various consultants' inputs and member defined feedback and/or changes amongst others.

TYPICAL FLOOR BLOCK PLAN



ANNEXURE W (colly)
SOCIETY APPROVED PLANS PROPOSED

SR. NO.	DESCRIPTION	HEIGHT 120 M.	HEIGHT 70 M.	TOWER -1				TOWER -2			TOWER -3			TOWER -4			
				MOFA				MOFA			MOFA			MOFA			
				STACK 1	STACK 2	STACK 3	STACK 4	STACK 1	STACK 2	STACK 3	STACK 1	STACK 2	STACK 3	STACK 1	STACK 2	STACK 3	STACK 4
55	TERRACE FLOOR																
54	42Nd Floor	3.5		SALE	SALE	SALE	SALE							1560	2031	1294	SALE
53	41St Floor	3.5		SALE	SALE	SALE	SALE							1560	2031	1253	SALE
52	40Th Floor	3.5		SALE	SALE	SALE	SALE							1560	2031	1253	SALE
51	39Th Floor	3.5		SALE	SALE	SALE	SALE							1560	2031	1253	SALE
50	38Th Floor	3.5		SALE	SALE	SALE	SALE							1560	1968	1253	4739
49	37Th Floor	3.5		SALE	SALE	SALE	SALE							1560	1968	1253	3884
48	36Th Floor	3.5		SALE	SALE	SALE	SALE							1560	1968	1253	3884
47	35Th Floor	3.5		REFUGE	SALE	SALE	SALE							1560	1858	1253	REFUGE
46	34Th Floor	3.5		SALE	SALE	SALE	SALE							1494	1858	1253	3884
45	33Rd Floor	3.5		SALE	SALE	SALE	SALE							1494	1858	1162	3228
44	32Nd Floor	3.5		SALE	SALE	SALE	SALE							1451	1858	1162	3228
43	31ST Floor	3.5		SALE	SALE	SALE	SALE							1451	1858	1162	3033
42	30Th Floor	3.5		SALE	SALE	SALE	SALE							1451	1858	1162	3033
41	29Th Floor	3.5		SALE	SALE	SALE	SALE							1356	1858	1162	3033
40	28Th Floor	3.5		REFUGE	SALE	SALE	SALE							1356	1858	1162	REFUGE
39	27Th Floor	3.5		SALE	SALE	SALE	SALE							1356	1858	1120	3033
38	26Th Floor	3.5		SALE	SALE	SALE	SALE							1356	1858	1120	3033
37	25Th Floor	3.5		SALE	SALE	SALE	SALE							1356	1858	1120	2844
36	24Th Floor	3.5		SALE	SALE	SALE	SALE							1356	1858	1120	2844
35	23Rd Floor	3.5		SALE	SALE	SALE	SALE							1120	1858	1120	2751
34	22Nd Floor	3.5		SALE	SALE	SALE	SALE							1120	1858	1120	2751
33	21St Floor	3.5		REFUGE	SALE	SALE	SALE							1120	1858	1120	REFUGE
32	20Th Floor	3.5		SALE	SALE	SALE	SALE							1120	1858	1120	2751
31	19Th Floor	3.5		SALE	SALE	SALE	1858							1062	1858	1120	2654
30	18Th Floor	3.5		SALE	SALE	SALE	1858							1062	1858	1120	2485
29	17Th Floor	3.5		SALE	SALE	SALE	1858							1062	1858	1120	2485
28	16Th Floor	3.5		SALE	SALE	SALE	1858							1062	1858	1120	2485
27	15Th Floor	3.5		SALE	SALE	SALE	1858							960	1858	1120	2485
26	14Th Floor	3.5		REFUGE	SALE	SALE	1858							960	1858	1120	REFUGE
25	13Th Floor	3.5		SALE	SALE	SALE	1858							960	1774	1120	2216
24	12Th Floor	3.5		SALE	SALE	SALE	1858							960	1774	1120	2216
23	11Th Floor	3.5	3.2	SALE	SALE	SALE	1858	603	SALE	752	603	603	683	960	1660	1120	2216
22	10Th Floor	3.5	3.2	SALE	SALE	SALE	1660	603	765	752	603	603	603	880	1560	1062	2216
21	9Th Floor	3.5	3.2	SALE	SALE	SALE	1660	603	752	752	603	603	603	880	1560	1062	2031
20	8Th Floor	3.5	3.2	SALE	SALE	SALE	1660	603	752	752	603	603	603	880	1560	1062	2031
19	7Th Floor	3.5	3.2	REFUGE	SALE	SALE	1660	603	752	752	603	603	603	800	1560	960	REFUGE
18	6Th Floor	3.5	3.2	SALE	SALE	SALE	1605	603	725	725	603	603	603	800	1560	880	1968
17	5Th Floor	3.5	3.2	SALE	1451	SALE	1605	603	725	683	603	603	603	800	1560	880	1968
16	4Th Floor	3.5	3.2	SALE	1356	SALE	1605	603	725	683	603	603	603	800	1560	880	1858
15	3Rd Floor	3.5	3.2	SALE	1356	SALE	1605	603	683	683	603	603	603	800	1560	800	1858
14	2Nd Floor	3.5	3.2	SALE	1356	SALE	1605	603	603	683	603	603	603	800	1560	800	1858
13	1St Floor	3.5	3.2	SALE	1356	SALE	1605	603	603	603	603	603	603	800	1560	800	1560
12	E-Deck floor	4.3	4.2														
11	Service Floor	1.8	1.8														
10	7Th Podium	2.9	2.95														
9	6Th Podium	2.9	2.95														
8	5Th Podium	2.9	2.95														
7	4Th Podium	2.9	2.95														
6	3Rd Podium	2.9	2.95														
5	2Nd Podium	2.9	2.95														
4	1St Podium	2.9	2.95														
3	Ground	6	4.2														
2	Plinth	0.6	0.6														
1	1St Basement	6															

The proposed design plans, proposed layout and associated design based elements are subject to change based on multiple factors including, but not limited to, approval of existing carpet areas by the competent authorities, design and planning constraints, municipal approvals, various consultants' inputs and member defined feedback and/or changes among others.